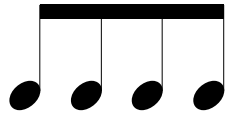


Dissecting the Beat



1 & 2 &

Instructions: On the **bottom** row, fill in

1	&	2	&	3	&	4	&
---	---	---	---	---	---	---	---

 etc
 On the **top**, only fill out the symbol for the actual note or rest displayed
 Note: the spacing isn't exactly how you would see it in properly engraved music. This worksheet is to help understand how to break down the beat.

4/4

4/4

4/4

4/4

4/4

4/4

4/4