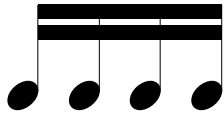


Dissecting the Beat



1 e & a

Instructions: On the **bottom** row, fill in

1	e	&	a
---	---	---	---

 2

e	&	a
---	---	---

 etc
 On the **top**, only fill out the symbol for the actual note or rest displayed
 Note: the spacing isn't exactly how you would see it in properly engraved music. This worksheet is to help understand how to break down the beat.

Seven rows of 4/4 musical notation exercises. Each row consists of a musical staff with a 4/4 time signature, followed by a two-row grid for note identification. The first row includes a pre-filled example: '1 e & a' in the bottom row of the grid.

Row 1: Musical staff with four measures of quarter notes. Grid: empty.

Row 2: Musical staff with four measures of quarter notes. Grid: '2 &' in the top row, '2 e & a' in the bottom row.

Row 3: Musical staff with four measures of quarter notes. Grid: empty.

Row 4: Musical staff with four measures of quarter notes. Grid: empty.

Row 5: Musical staff with four measures of quarter notes. Grid: empty.

Row 6: Musical staff with four measures of quarter notes. Grid: empty.

Row 7: Musical staff with four measures of quarter notes. Grid: empty.