

Let's Read Music

the music alphabet & the alto clef

The musical alphabet is the letters we use for naming pitches. The alphabet consists of seven letters: A, B, C, D, E, F, G. After "G" the alphabet repeats.

1. On the line below, write out the musical alphabet three times in a row:

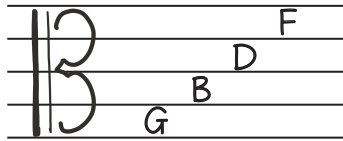
2. Now write it backwards three times in a row (G, F, E, D, C, B, A):

Memorize by saying it over and over again.
 ABCDEFGABCDEFGABC...
 GFEDCBAGFEDCBAGFE...

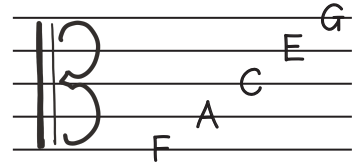


Each letter occupies a specific line or space on the treble clef.

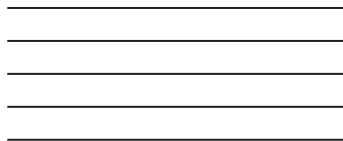
The spaces use the letters
G-B-D-F



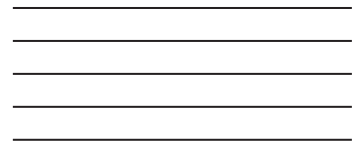
The lines use the letters
F-A-C-E-G



3. Your turn!
 Draw a alto clef and place GBDF on the staff



4. Your turn!
 Draw a alto clef and place FACEG on the staff



To help remember the letters that go on the lines, let's use a mnemonic device.



Fast Alligators Can Eat Good

To remember the spaces, we will use

Great Big Dragons Fly



Lastly, let's fill in the entire alto staff: 5. Your turn!

