

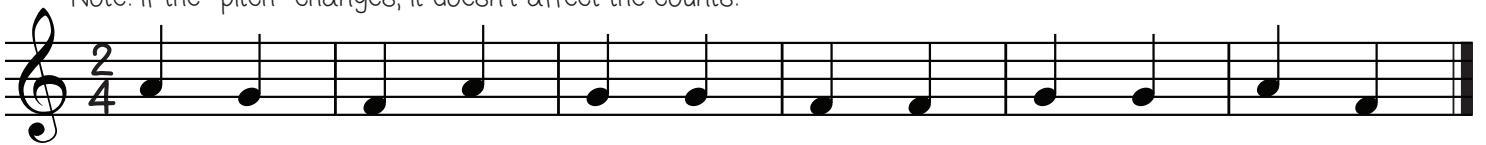
Write in the Counts

Practice Worksheet #1

Instructions: write in the counts beneath each beat



Note: if the *pitch* changes, it doesn't affect the counts.



Write in the Counts

Practice Worksheet #2

Instructions: write in the counts beneath each beat

$\frac{2}{4}$ 

$\frac{4}{4}$ 

$\frac{3}{4}$ 

$\frac{4}{4}$ 

$\frac{2}{4}$ 

$\frac{3}{4}$ 

Write in the Counts

Practice Worksheet #3

Instructions: write in the counts beneath each beat

4/4 

2/4 

3/4 





